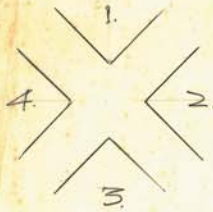
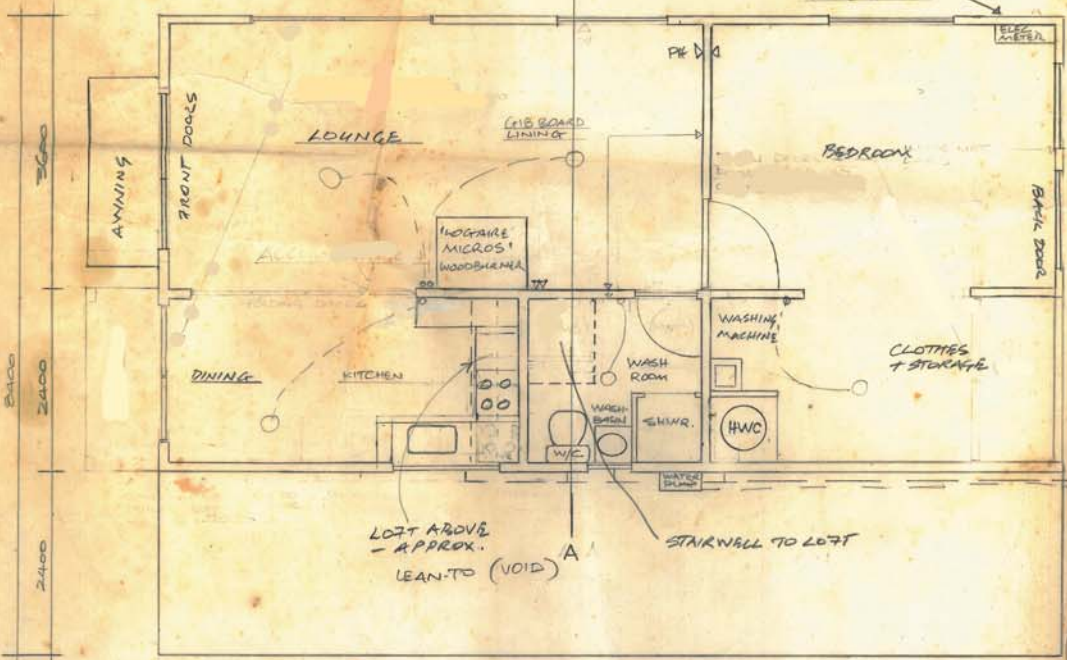
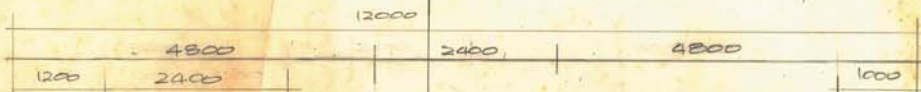
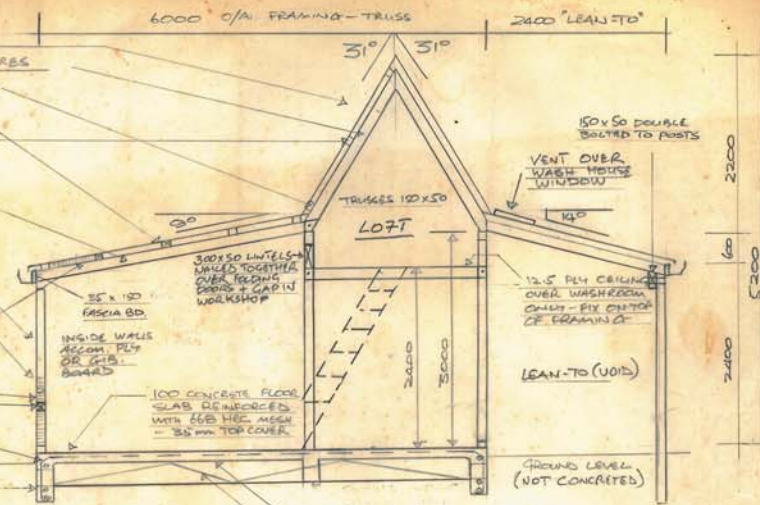


ELEVATIONS



PREFAB TRUSSES BY CANTON HOCT

- CORRUGATED IRON ROOF
- APPROVED PREFABRICATED ROOF TRUSSES AT 1200 CENTRES
- PURLINS, 100 x 50 (ON EDGE) AT 900 CENTRES
- BUILDING PAPER OVER NETTING
- BUILDING PAPER OVER 1200 x 2400 x 12.5 PLY
- FASCIA BOARD 150 x 35 FRONT + BACK
- PREFAB WALLS 100 x 50 STUDS AT 600 CENTRES BETWEEN 100 x 50 TOP + BOTTOM PLATE
- WITH PLY ON OUTSIDE OF WALL ONLY
- 50 x 25 VERTICAL BATTENS ON OUTSIDE WALL AT 250 CENT. BUILDING PAPER BETWEEN PLY + STUD
- PLY: CHH 12.5mm (EXTERIOR QUALITY) - SHIP LAPPED AT JOINS
- FIX BOTTOM PLATE WITH LUMBERLOCK ANCHOR PLATES AT 1200 CENTRES
- Batts INSULATION (IN ACCOM ONLY)
- LOGS AT 600mm CENTRES
- 200 CONCRETE BLOCK BOND BEAM
- REINFORCE WITH 1 x D12 ROD



FLOOR PLAN

200 x 500 DEEP CONCRETE BLOCK FOOTING - REINF. WITH 2 x D12 RODS WITH #10 TIES AT 100 CENTRES LAPPED WITH MESH AND

STAIRS TO LOFT - NOT TO SCALE - STEPS APPROX 300 x 1000

'LOGGIA MICROS' WOODBURNER INSTALLED TO MANUFACTURER'S SPECIFICATIONS AS PER ATTACHED BROCHURE.

CROSS SECTION AT A-A

ELECTRICAL

- CEILING LIGHT
- WALL SWITCH
- SOCKET OUTLET
- DOUBLE SOCKET OUT LET
- PH PHONE JACK POINT

FLOORSPACE OF LOFT = 18 m<sup>2</sup>

FLOORSPACE OF GROUND FLOOR = 7.72 m<sup>2</sup>

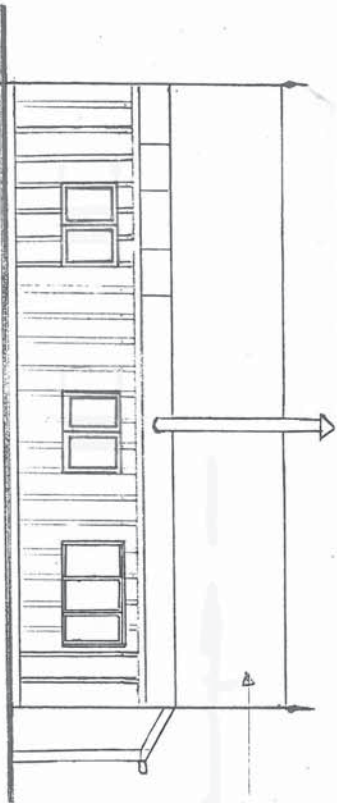
TOTAL FLOORSPACE = 90 m<sup>2</sup>

BRACING:

- EXTERIOR WALLS OF BUILDING (EXCLUDING LEAN-TO AND WINDOW / DOORS) IS PLY COVERED.
- CEILING OF ACCOMMODATION IS PLY COVERED
- WHOLE OF INSIDE / CEILING OF STABLE IS PLY LINED

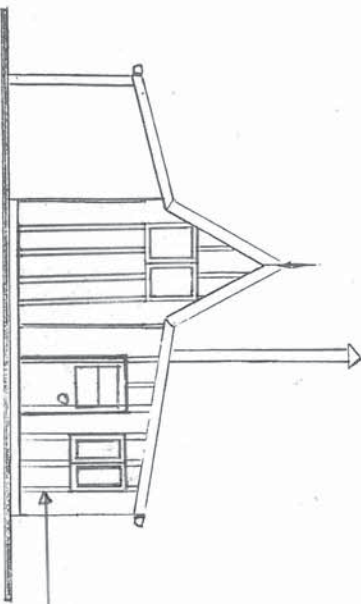
PROPOSED KOTTAGE / ACCOMADATION FOR A.H. + M.M. BANKS  
TEAWA RD, TAMAHERE LOT 3 DPG 58219

SCALE: 1 : 50



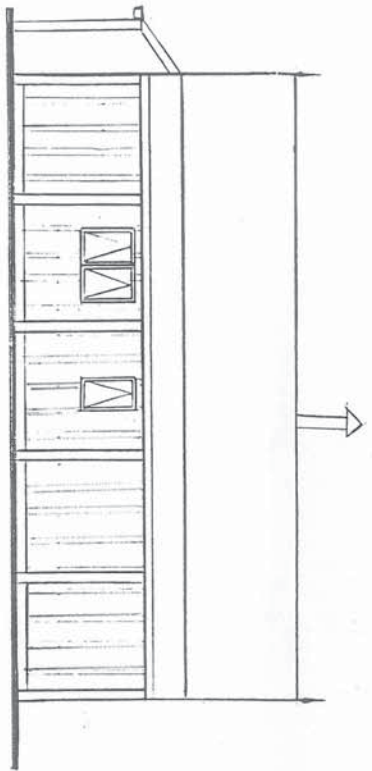
CORRUGATED IRON ROOF

ELEVATION 1.

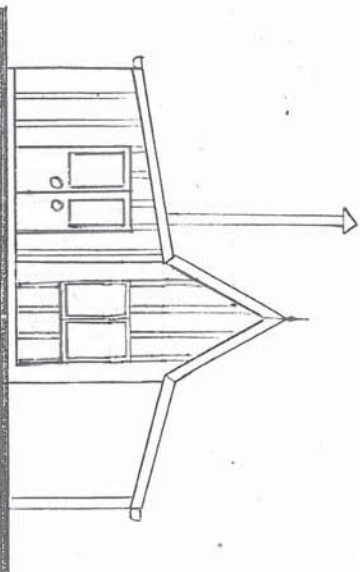


BATTENS ON OUTSIDE  
OF PLY - ABOUT  
250 - 500 APART.  
BATTENS ROUGH  
SAWN 50 X 25.  
DOUBLE WEATHER GROVE  
AT BACK AT JOINS OF  
PLY.

ELEVATION 2



ELEVATION 3



ELEVATION 4

ELEVATIONS